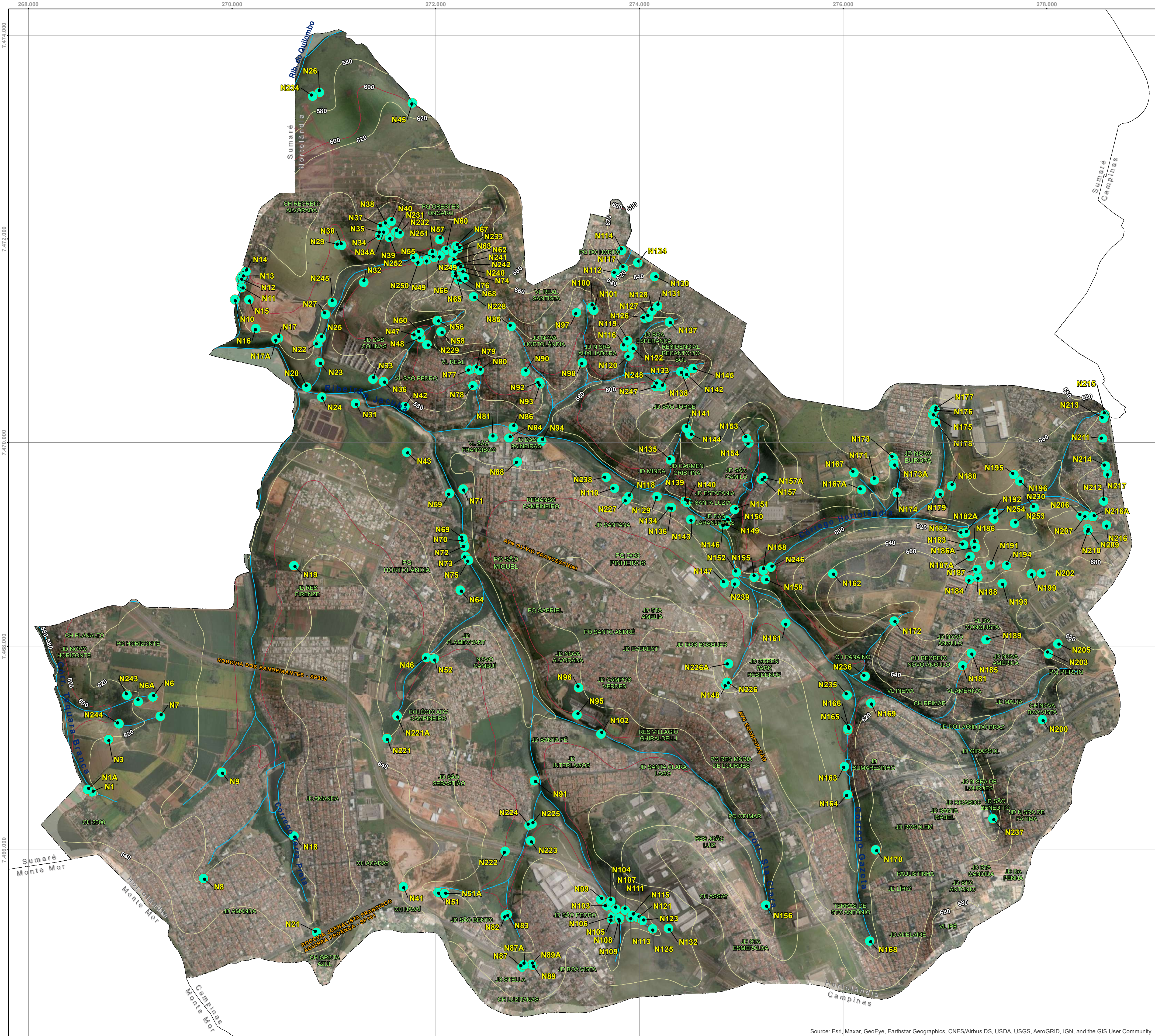


ANEXO IV: 037-AMB-DE.P-004-004 – MAPA DE NASCENTES INICIAL

NASCENTES					
Name	Coordenadas UTM SIRGAS 2000		Name	Coordenadas UTM SIRGAS 2000	
	E	N		E	N
N1	268.623	7.466.571	N129	274.172	7.469.474
N1A	268.582	7.466.594	N130	274.149	7.471.634
N3	268.787	7.467.086	N131	274.179	7.471.345
N6	269.222	7.467.504	N132	274.285	7.465.231
N6A	269.079	7.467.457	N133	274.220	7.470.551
N7	269.295	7.467.315	N134	274.298	7.469.369
N8	269.720	7.465.720	N135	274.305	7.469.833
N9	269.898	7.466.764	N136	274.316	7.469.366
N10	270.029	7.471.407	N137	274.294	7.471.188
N11	270.095	7.471.525	N138	274.407	7.470.701
N12	270.082	7.471.610	N139	274.450	7.469.428
N13	270.097	7.471.637	N140	274.468	7.469.416
N14	270.136	7.471.683	N141	274.460	7.470.144
N15	270.166	7.471.405	N142	274.453	7.470.678
N16	270.233	7.471.124	N143	274.505	7.469.249
N17	270.455	7.471.028	N144	274.496	7.470.088
N17A	270.432	7.471.018	N145	274.525	7.470.731
N18	270.607	7.466.137	N146	274.823	7.469.197
N19	270.608	7.473.794	N147	274.833	7.468.623
N20	270.733	7.470.548	N148	274.849	7.467.823
N21	270.829	7.465.193	N149	274.846	7.469.201
N22	270.839	7.470.978	N150	274.853	7.469.242
N23	270.860	7.470.790	N151	274.935	7.469.348
N24	270.881	7.470.450	N152	274.954	7.468.727
N25	270.874	7.471.030	N153	275.052	7.470.045
N26	270.856	7.473.443	N154	275.076	7.470.000
N27	270.919	7.471.263	N155	275.127	7.468.679
N28	271.045	7.471.945	N156	275.240	7.465.458
N30	271.076	7.471.941	N157	275.195	7.469.644
N31	271.213	7.470.387	N157A	275.214	7.469.660
N32	271.293	7.471.578	N158	275.216	7.468.749
N33	271.384	7.470.628	N159	275.237	7.468.660
N34	271.449	7.472.036	N161	275.438	7.468.230
N34A	271.494	7.472.060	N162	275.898	7.468.717
N35	271.459	7.472.063	N163	276.012	7.466.822
N36	271.487	7.470.603	N164	276.044	7.466.545
N37	271.468	7.472.127	N165	276.047	7.467.195
N38	271.513	7.472.145	N166	276.046	7.467.180
N39	271.544	7.472.018	N167	276.106	7.469.708
N40	271.563	7.472.176	N167A	276.180	7.469.539
N41	271.686	7.465.640	N168	276.261	7.468.108
N42	271.697	7.470.358	N169	276.272	7.467.445
N43	271.715	7.469.910	N170	276.321	7.466.003
N45	271.769	7.473.339	N171	276.309	7.469.635
N46	271.908	7.467.891	N172	276.502	7.468.252
N47	271.800	7.471.053	N173	276.491	7.469.855
N48	271.853	7.471.033	N173A	276.498	7.469.789
N49	271.914	7.471.797	N174	276.531	7.469.512
N50	271.841	7.471.081	N175	276.877	7.470.279
N51	272.021	7.465.585	N176	276.893	7.470.319
N51A	272.084	7.465.574	N177	276.901	7.470.333
N52	271.988	7.467.878	N178	276.908	7.470.206
N55	271.987	7.471.822	N179	276.946	7.469.504
N56	272.015	7.471.202	N180	277.054	7.469.576
N57	272.036	7.471.969	N181	277.177	7.468.912
N58	272.053	7.471.094	N182	277.169	7.469.111
N59	272.135	7.469.505	N182A	277.202	7.469.116
N60	272.100	7.471.892	N183	277.184	7.469.000
N62	272.165	7.471.793	N184	277.242	7.468.659
N63	272.170	7.471.871	N185	277.259	7.467.936
N64	272.251	7.468.552	N186	277.290	7.469.016
N65	272.184	7.471.652	N186A	277.301	7.468.973
N66	272.199	7.471.681	N187	277.315	7.468.760
N67	272.200	7.471.934	N187A	277.247	7.468.883
N68	272.225	7.471.601	N188	277.324	7.468.680
N69	272.266	7.469.062	N189	277.402	7.468.069
N70	272.272	7.469.035	N191	277.449	7.468.804
N71	272.269	7.469.547	N192	277.478	7.469.319
N72	272.284	7.469.386	N193	277.561	7.468.014
N73	272.294	7.468.883	N194	277.604	7.468.797
N74	272.254	7.471.683	N195	277.677	7.469.690
N75	272.322	7.468.847	N196	277.732	7.469.627
N76	272.282	7.471.621	N199	277.848	7.468.715
N77	272.332	7.470.717	N200	277.957	7.467.282
N78	272.366	7.470.562	N202	277.946	7.468.719
N79	272.394	7.470.728	N203	278.000	7.468.014
N80	272.428	7.470.713	N205	278.108	7.468.028
N81	272.562	7.470.051	N206	278.335	7.469.283
N82	272.683	7.465.354	N207	278.383	7.469.286
N83	272.701	7.465.367	N209	278.400	7.469.159
N84	272.718	7.470.049	N210	278.405	7.469.804
N85	272.742	7.471.145	N211	278.549	7.470.041
N86	272.782	7.470.154	N212	278.560	7.469.430
N87	272.846	7.464.851	N213	278.555	7.470.239
N87A	272.866	7.464.873	N214	278.577	7.469.773
N88	272.802	7.469.815	N215	278.569	7.470.278
N89	272.954	7.464.866	N216	278.587	7.469.194
N89A	272.942	7.464.877	N216A	278.452	7.469.275
N90	272.878	7.470.699	N217	278.597	7.469.698
N91	272.869	7.469.679	N221	271.621	7.467.318
N92	273.016	7.470.597	N222	272.681	7.465.988
N93	273.023	7.470.579	N223	272.931	7.466.090
N94	273.042	7.470.018	N224	272.916	7.466.242
N95	273.387	7.467.328	N225	272.945	7.466.256
N96	273.403	7.467.596	N226	274.861	7.467.648
N97	273.361	7.471.279	N26A	274.875	7.467.929
N98	273.439	7.470.789	N227	273.870	7.469.438
N99	273.619	7.465.513	N228	272.370	7.471.433
N100	273.535	7.471.338	N229	271.914	7.470.964
N101	273.553	7.471.304	N230	273.901	7.470.871
N102	273.623	7.467.141	N231	271.608	7.472.071
N103	273.680	7.465.451	N232	271.641	7.472.051
N104	273.719	7.465.498	N233	272.220	7.471.912
N105	273.726	7.465.322	N234	270.790	7.473.405
N106	273.735	7.465.347	N235	276.039	7.467.522
N107	273.768	7.465.422	N236	276.216	7.467.706
N108	273.801	7.465.331	N237	277.471	7.466.308
N109	273.803	7.465.318	N238	273.672	7.469.862
N110	273.754	7.469.556	N239	274.942	7.468.624
N111	273.859	7.465.411	N240	272.231	7.471.732
N112	273.866	7.471.668	N241	272.213	7.471.752
N113	273.915	7.465.339	N242	272.197	7.471.745
N114	273.828	7.471.891	N243	268.968	7.467.521
N115	273.929	7.465.360	N244	268.888	7.467.240
N116	273.852	7.470.947	N245	270.984	7.471.380
N117	273.846	7.471.715	N246	275.290	7.468.780
N118	273.862	7.469.473	N247	274.161	7.470.552
N119	273.885	7.471.007	N248	274.178	7.470.578
N120	273.898	7.470.854	N249	272.042	7.471.837
N121	273.985	7.465.336	N250	271.830	7.471.780
N122	273.928	7.470.932	N251	271.970	7.471.861
N123	274.028	7.465.309	N252	271.791	7.471.821
N124	273.985	7.471.771	N253	277.682	7.469.210
N125	274.151	7.465.226	N254	277.481	7.469.252
N126	274.052	7.471.227			
N127	274.091	7.471.237			
N128	274.124	7.471.296			



LEGENDA

- Limite Municipal
- Nascentes
- Curva Intermediária
- Curva Mestra
- Hidrografia

0 250 500 1.000 m

Sistema de Coordenadas SIRGAS 2000
Projeção UTM (Universal Transversa de Mercator)

NOTAS

1. Projeção: UTM SIRGAS 2000, Fuso 23, Sul (Fonte: PMH, IBGE, 2019).
2. Para Relatório Técnico, ver Documento nº. 037-AMB-RT-P-004-001.

EXECUTADO POR: PLANOS ENGENHARIA		ASSUNTO: PLANO DE ARBORIZAÇÃO URBANA E O INVENTÁRIO DAS NASCENTES EXISTENTES NO MUNICÍPIO DE HORTOLÂNDIA, NO ÂMBITO DO "PROGRAMA DE INFRAESTRUTURA URBANA E DE DESENVOLVIMENTO SUSTENTÁVEL", FINANCIADO PELA CAF	
DESENHO Nº: 037-AMB-DE-P-004-004	ESCALA: 1:20.000	OPERAÇÃO: 037-AMB	TRABALHO: DE-P-004
PROJETO: LUIZ SOAVE	VERIFICAÇÃO: JULIO FERNANDO SCOTTINI CREA: 1000070449-SP	DES- Nº: 004	DATA: 08/2021
APROVAÇÃO: ANA BEATRIZ LIMA CREA: 5061849511-SP	ART Nº: ANA Beatriz B. V. Lima CREA-SP 5061849511	REVISÃO: 0	

REV. Nº	DATA	EMISSÃO INICIAL	NATUREZA DA REVISÃO	EXECUÇÃO	VERIFICAÇÃO	APROVAÇÃO	DOCUMENTO DE REFERÊNCIA
00	08/2021						